

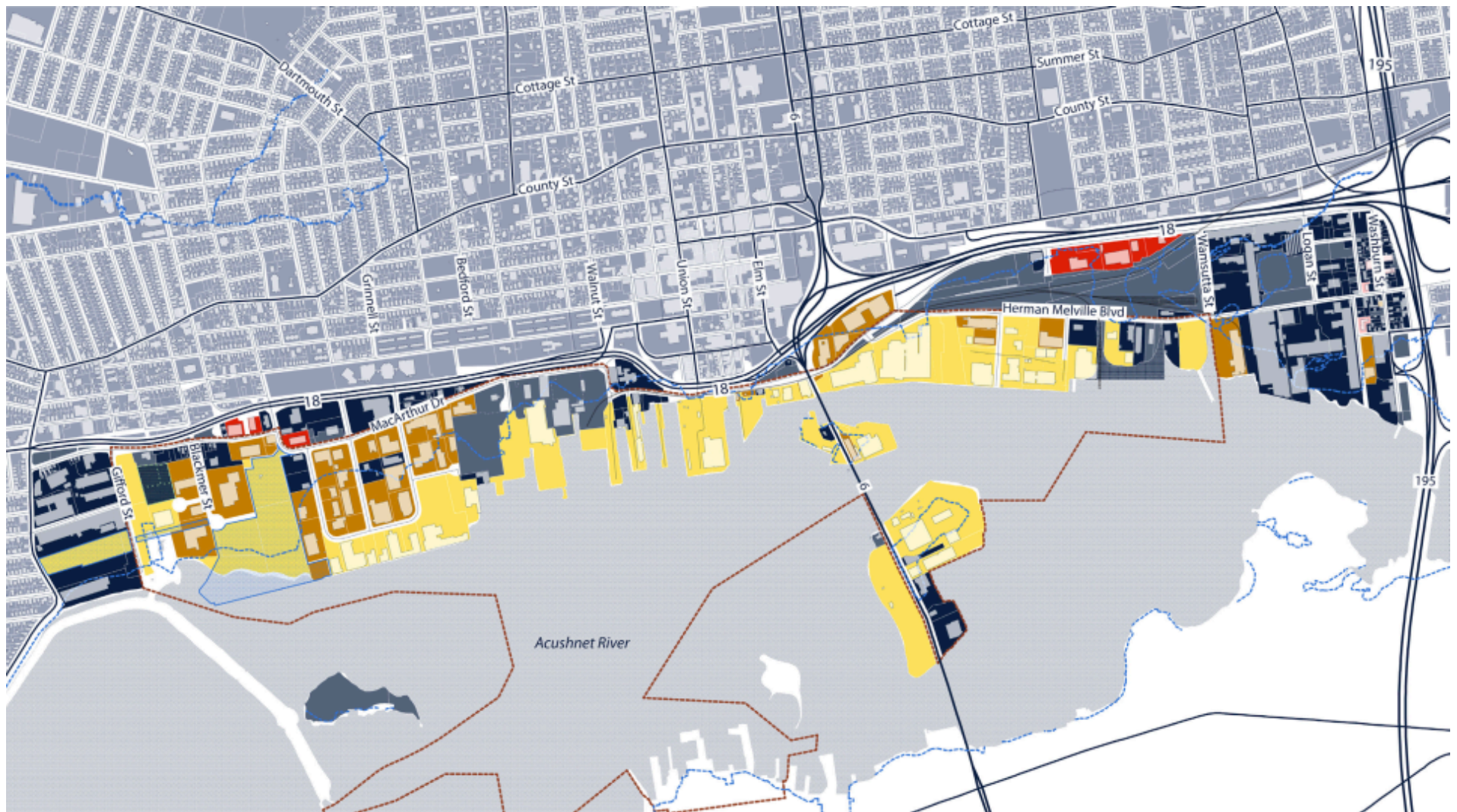


Offshore Wind in New York

September 18, 2017

Port of New Bedford
Harbor Development Commission

Port of New Bedford



2016 Economic Impact Report

**\$9.8 billion of
total economic
value**

- \$3.3 billion of direct business revenue
- \$6.1 billion of related output
- \$429.4 million of re-spending of direct income and local consumption purchases

**36,578 jobs
generated by Port
activity**

- Direct Jobs: 6,225 (91% from seafood industry)
- Induced Jobs: 4,101 (92 % from seafood industry)
- Indirect Jobs: 2,512 (88% from seafood industry)

**\$1.2 billion of
federal, state and
local taxes**

- \$150.5 million direct, induced and indirect
- \$358.1 million direct, induced, and indirect federal
- \$200.7 million related taxes/local taxes
- \$534.7 million related federal taxes

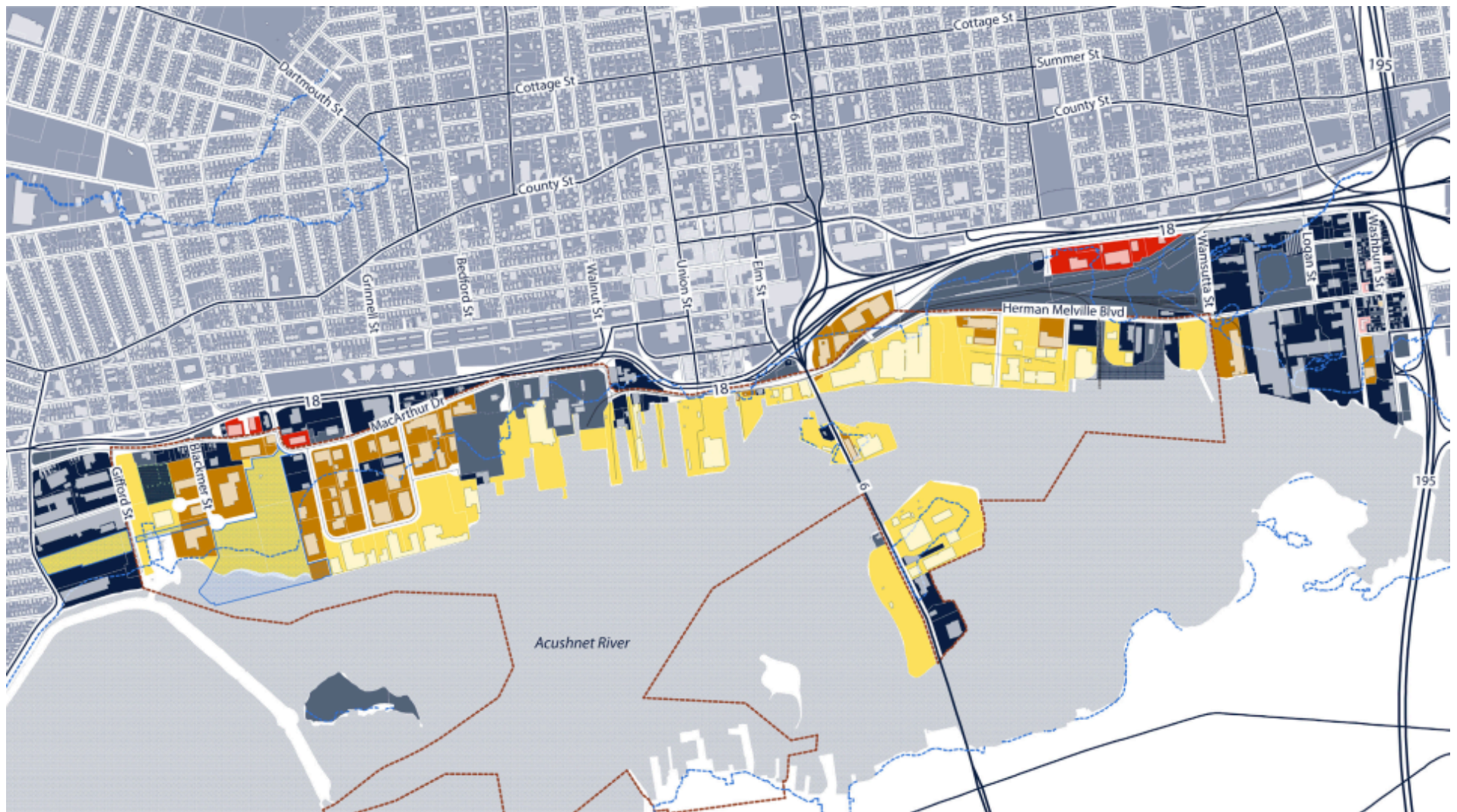
New Bedford Marine Commerce Terminal

tion

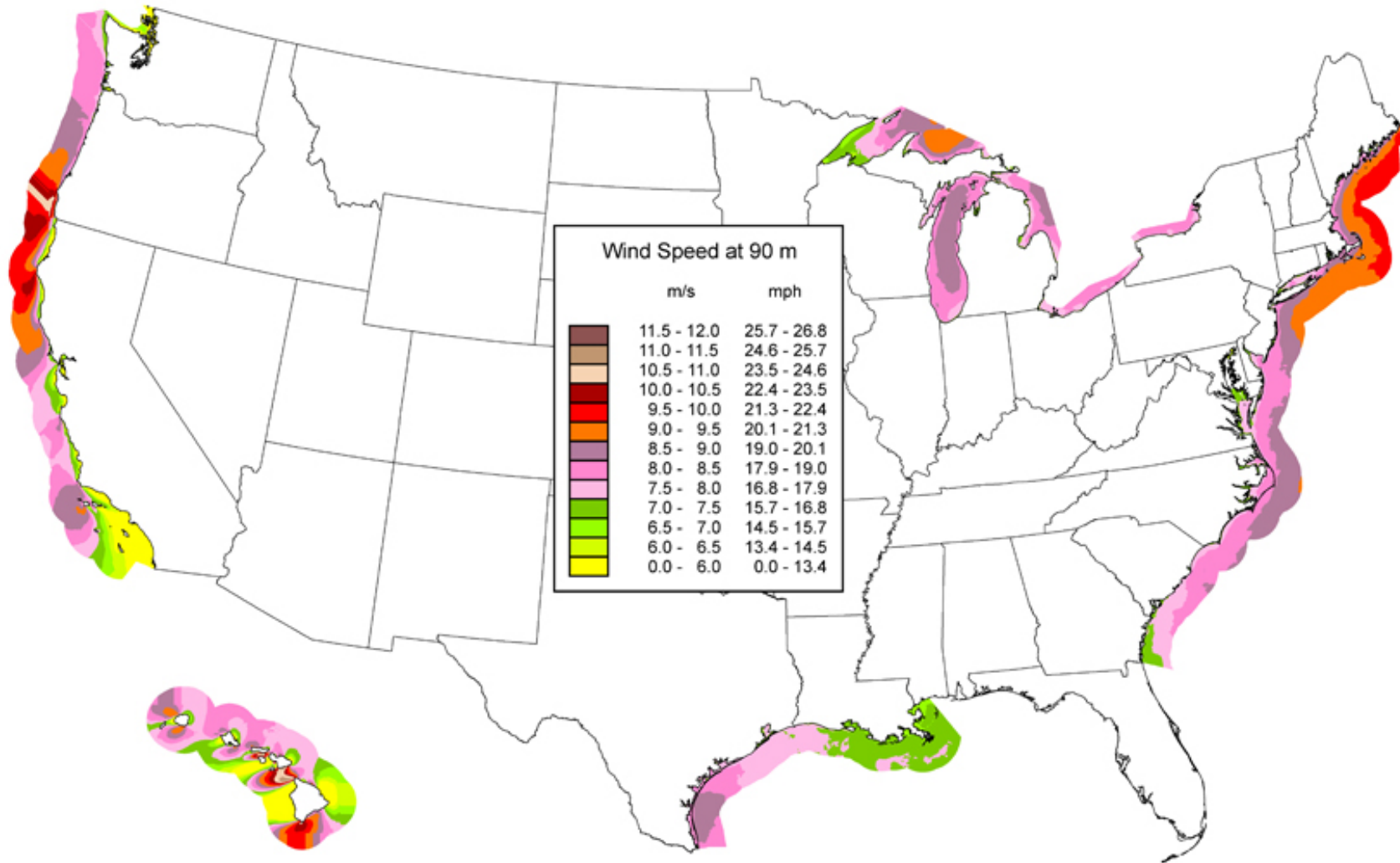




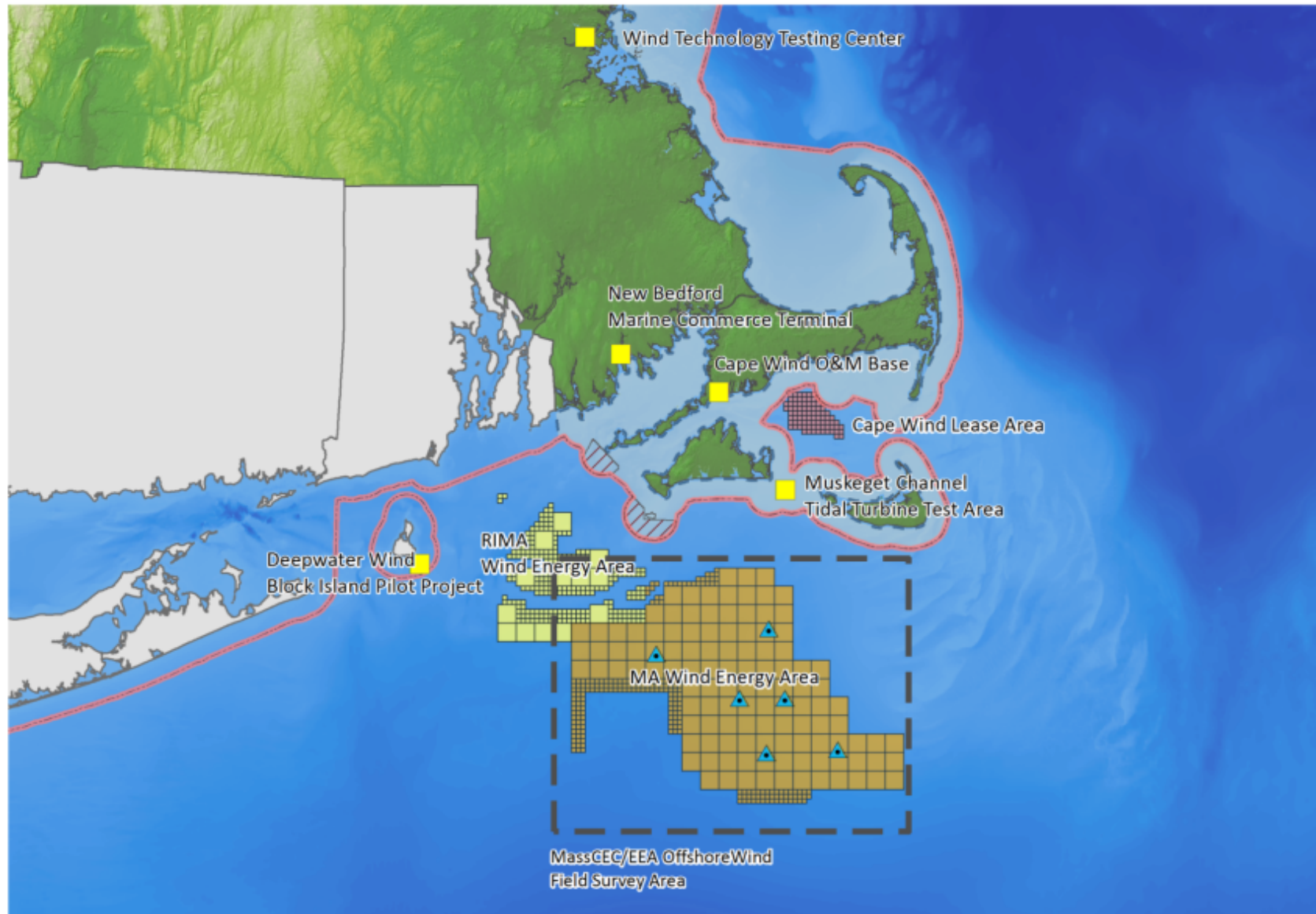
Port of New Bedford



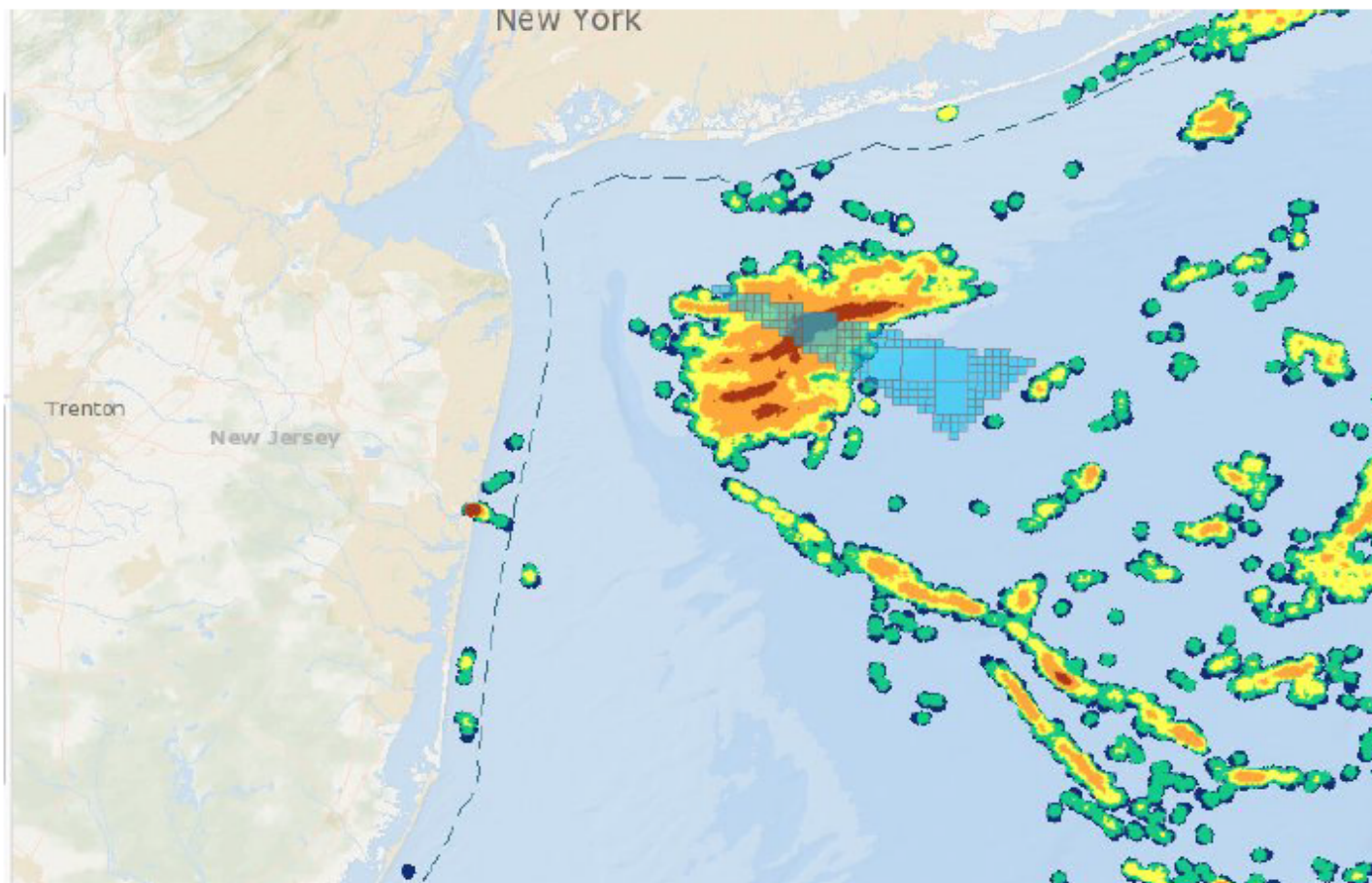
The Wind Resource



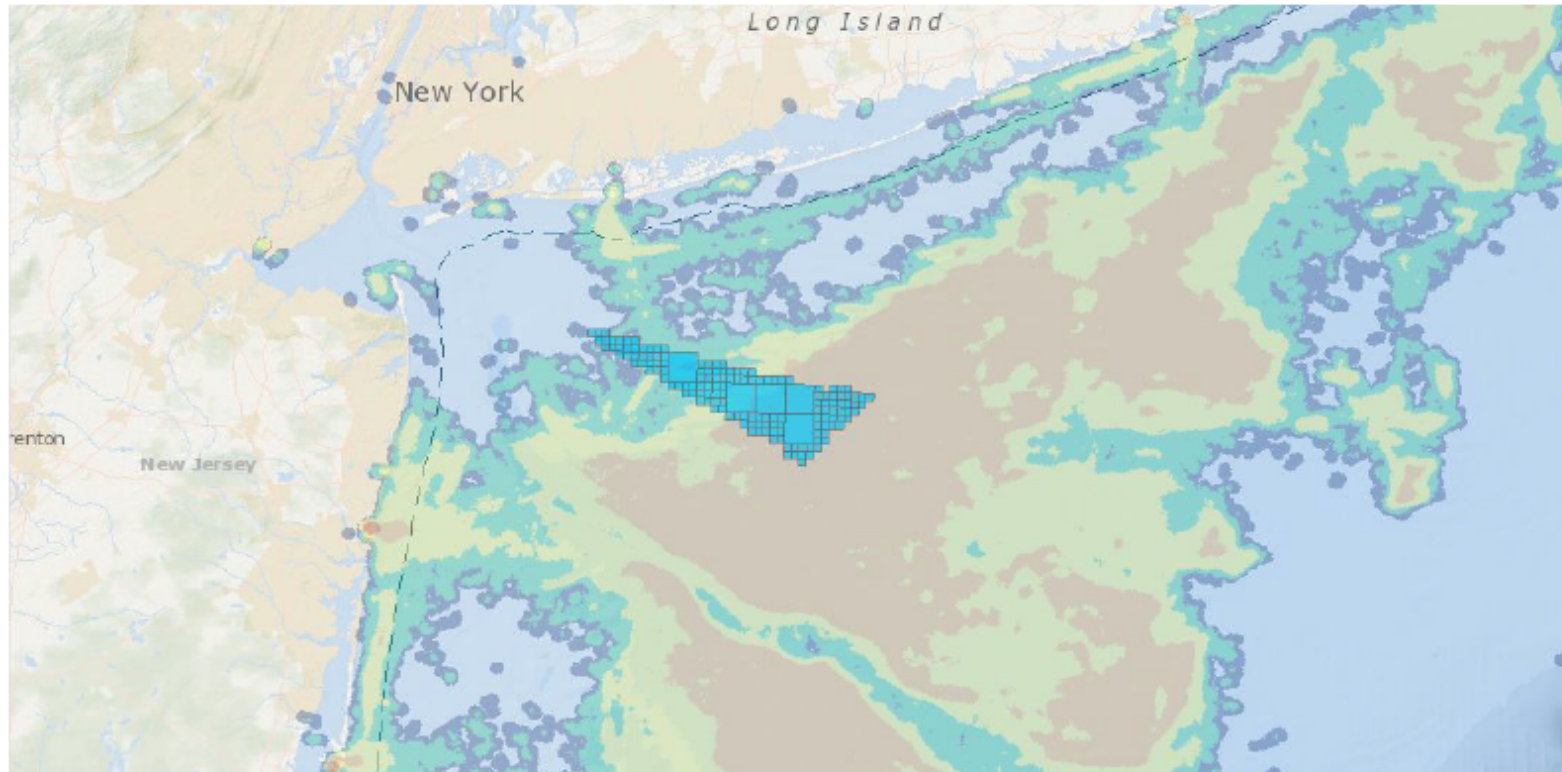
Southern New England Locations



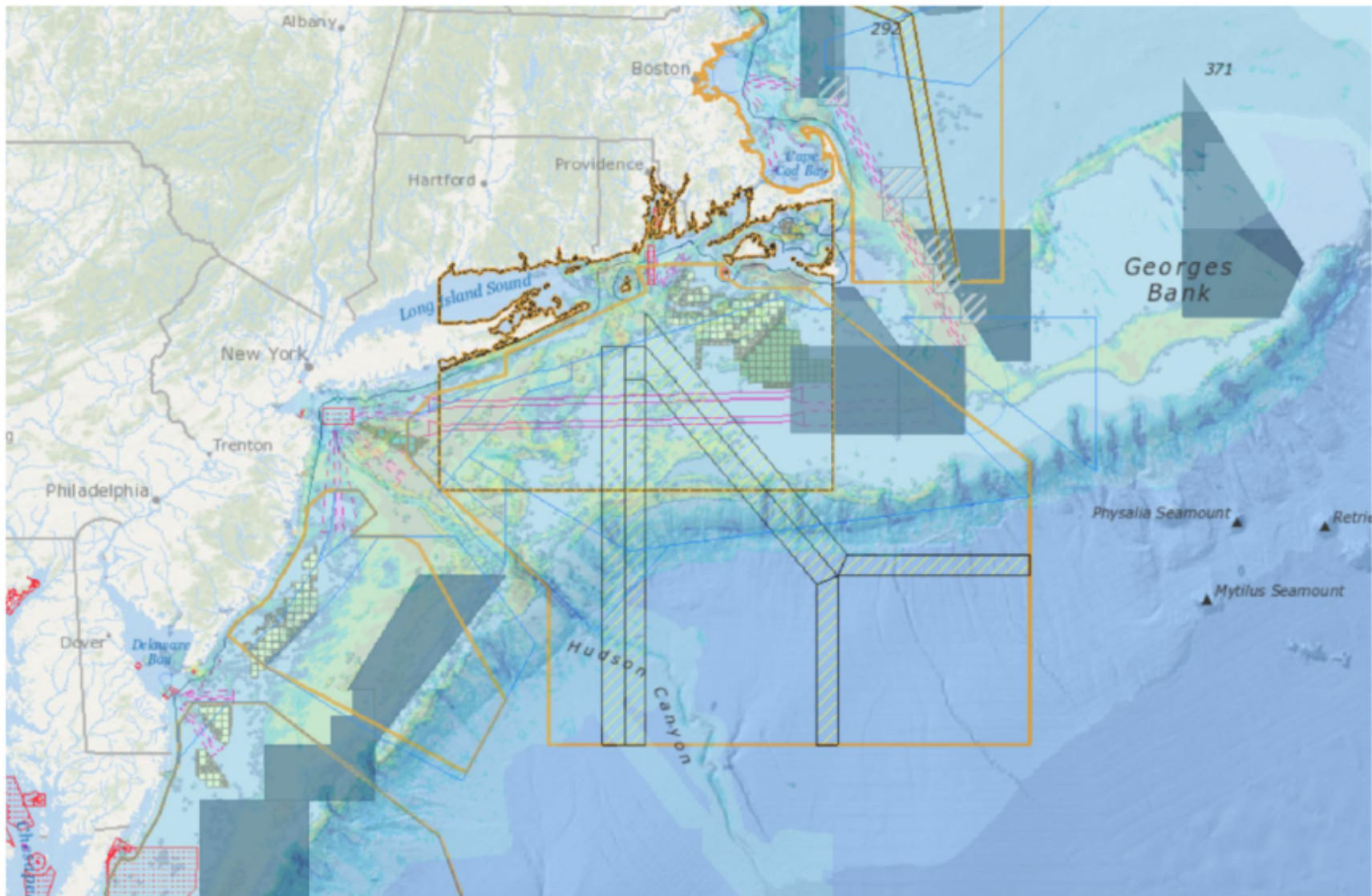
Squid Fishery



Scallop Fishery



Multiple Uses





Thank you!



Edward C. Anthes-
Washburn
Executive Director
Port of New Bedford
ewashburn@newbedford-ma.gov